



Figure 6. All-cause age-adjusted mortality rate by race: Allegheny County, 1970-2016

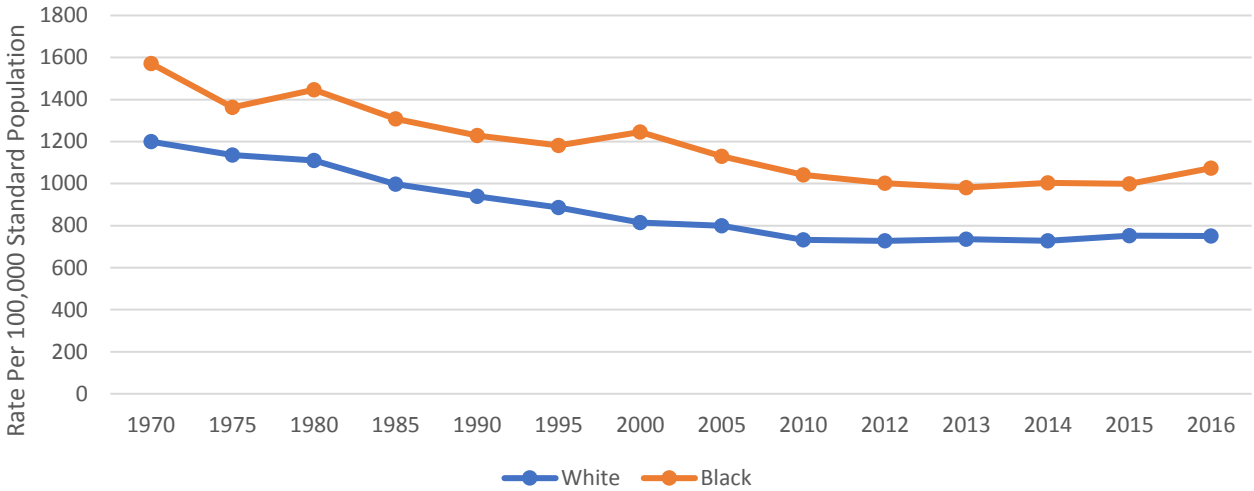
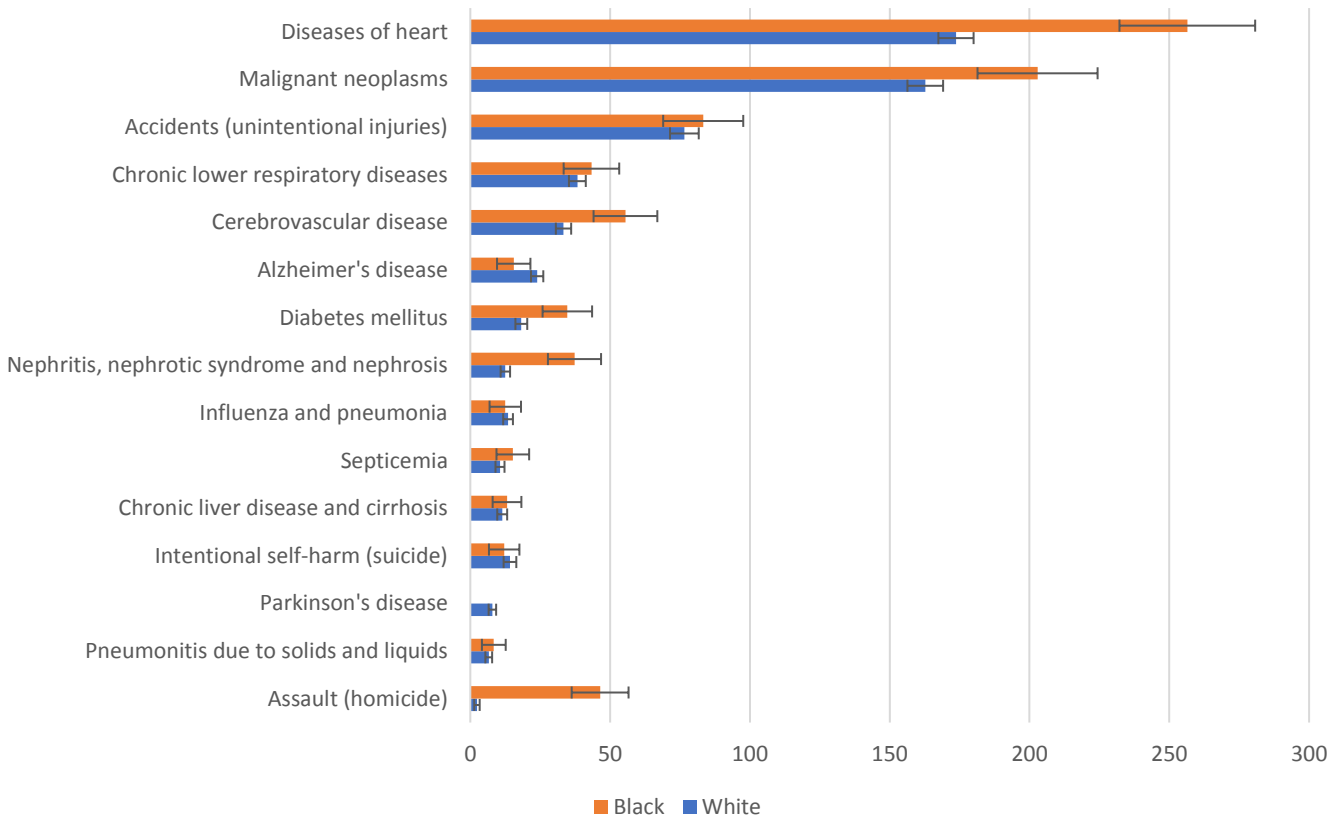


Figure 7. Age-adjusted mortality rates and confidence intervals by race for county leading causes of death: Allegheny County 2016



*Error bars indicate 95% confidence intervals



2016 Allegheny County Mortality Report

September 2018

Table 6: Leading cause rank, number of total deaths, age-adjusted mortality rate, and 95% confidence intervals for leading causes of death by race: Allegheny County, 2015 and 2016

Cause of Death	Black								White							
	2015				2016				2015				2016			
	Rank for Blacks	Number	Age-Adjusted Rate ^a	95% Confidence Interval	Rank for Blacks	Number	Age-Adjusted Rate ^a	95% Confidence Interval	Rank for Whites	Number	Age-Adjusted Rate ^a	95% Confidence Interval	Rank for Whites	Number	Age-Adjusted Rate ^a	95% Confidence Interval
All causes		1,675	998.8	(950.9, 1046.6)		1,787	1073.6	(1023.8, 1123.4)		11,904	752.7	(739.1, 766.2)		11,770	750.8	(737.2, 764.4)
Diseases of heart	1	391	231.2	(208.3, 254.1)	1	429	256.4	(232.2, 280.7)	1	3,086	182.8	(176.3, 189.2)	1	2,925	173.7	(167.4, 180.0)
Malignant neoplasms	2	352	208.9	(187.0, 230.7)	2	343	202.9	(181.4, 224.4)	2	2,520	164.8	(158.4, 171.2)	2	2,498	162.7	(156.3, 169.1)
Accidents (unintentional injuries)	3	101	59.6	(48.0, 71.2)	3	130	83.3	(69.0, 97.6)	3	674	57.7	(53.3, 62.0)	3	852	76.6	(71.4, 81.7)
Chronic lower respiratory diseases		56	34.4	(25.4, 43.4)		73	43.3	(33.4, 53.3)	4	577	36.3	(33.3, 39.2)	4	618	38.3	(35.3, 41.3)
Cerebrovascular disease	4	81	49.3	(38.6, 60.1)	4	91	55.5	(44.1, 66.9)	5	545	32.1	(29.4, 34.8)	5	569	33.3	(30.6, 36.1)
Alzheimer's disease		46	27.8	(19.7, 35.8)		26	15.5	(9.6, 21.5)		452	24.0	(21.8, 26.2)		455	23.9	(21.7, 26.1)
Diabetes mellitus		59	37.7	(28.1, 47.3)		59	34.7	(25.8, 43.6)		271	17.5	(15.4, 19.5)		285	18.2	(16.1, 20.4)
Nephritis, nephrotic syndrome and nephrosis		52	31.5	(23.0, 40.1)		59	37.3	(27.8, 46.8)		288	14.4	(12.5, 16.2)		230	12.5	(10.8, 14.2)
Influenza and pneumonia		32	19.0	(12.4, 25.5)		19	12.5	(6.9, 18.1)		239	16.8	(14.9, 18.7)		210	13.5	(11.8, 15.2)
Septicemia		33	19.6	(12.9, 26.3)		26	15.2	(9.4, 21.0)		174	11.0	(9.3, 12.6)		167	10.6	(9.0, 12.2)
Chronic liver disease and cirrhosis		23	12.9	(7.6, 18.1)		25	13.1	(8.0, 18.3)		148	11.6	(9.7, 13.4)		159	11.4	(9.6, 13.2)
Intentional self-harm (suicide)	7		NA	NA	19		12.1	(6.7, 17.6)		158	14.2	(12.0, 16.4)		150	14.2	(11.9, 16.5)
Parkinson's disease		2	NA	NA		6	NA	NA		125	7.8	(6.5, 9.2)		133	7.9	(6.5, 9.2)
Pneumonitis due to solids and liquids		14	9.0	(4.3, 13.6)		15	8.4	(4.2, 12.7)		113	6.3	(5.1, 7.4)		114	6.6	(5.4, 7.8)
Assault (homicide)	5	89	51.8	(41.1, 62.6)	5	80	46.4	(36.3, 56.6)		23	2.2	(1.3, 3.1)		23	2.4	(1.4, 3.3)

^aRate is deaths per 100,000 standard population
NA is censored due to low number of events

Table 7. Black to white age-adjusted mortality rate ratio: Allegheny County 2014-2016

Cause of Death	Black to White Ratio		
	2014	2015	2016
All Causes	1.4	1.3	1.4
Diseases of heart	1.3	1.3	1.5
Malignant neoplasms	1.3	1.3	1.2
Accidents (unintentional injuries)	0.7	1	1.1
Chronic lower respiratory diseases	1	0.9	1.1
Cerebrovascular disease	1.8	1.5	1.7
Alzheimer's disease	1.3	1.2	0.6
Diabetes mellitus	2.6	2.2	1.9
Nephritis, nephrotic syndrome and nephrosis	2	2.2	3.0
Influenza and pneumonia	1.3	1.1	0.9
Septicemia	2.1	1.8	1.4
Chronic liver disease and cirrhosis	0.8	1.1	1.2
Intentional self-harm (suicide)	0.4	0.3	0.9
Parkinson's disease	0.9	0.2	NA
Pneumonitis due to solids and liquids	0.9	1.4	1.3
Assault (homicide)	19.4	23.2	19.6

NA not available due to low number of events

Table 8. Median age (years) at death for county leading causes of death by race: Allegheny County, 2015 and 2016

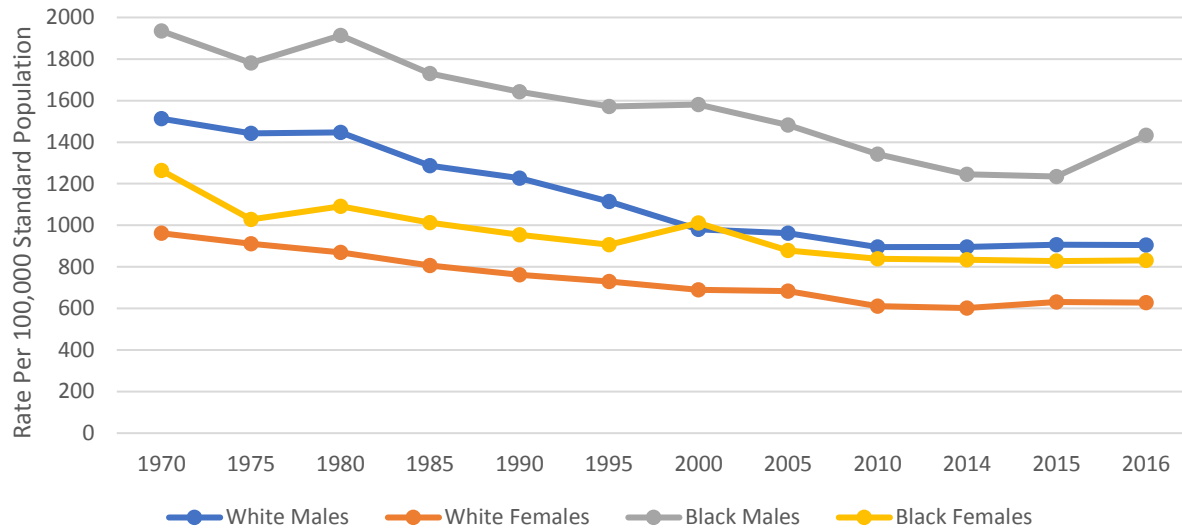
Cause of Death	2015		2016	
	White	Black	White	Black
All causes	82	69	81	68
Diseases of heart	84.5	73	84	72
Malignant neoplasms	75	71	75	69
Accidents (unintentional injuries)	54	55	51	51
Chronic lower respiratory diseases	80	76	81	71
Cerebrovascular disease	84	75	85	73
Alzheimer's disease	89	87	89	89.5
Diabetes mellitus	78	71	78	69
Nephritis, nephrotic syndrome and nephrosis	84	76	84.5	78
Septicemia	81	72	81	69.5
Influenza and pneumonia	86	73	86	68
Intentional self-harm (suicide)	51	35	49	34
Chronic liver disease and cirrhosis	60	60	63	62
Parkinson's disease	83	80.5	86	83
Pneumonitis due to solids and liquids	87	78	86	79
Assault (homicide)	28	25	38	26.5



2016 Allegheny County Mortality Report

September 2018

Figure 8. All-cause age-adjusted mortality rate by sex and race: Allegheny County, 1970-2016





2016 Allegheny County Mortality Report

September 2018

Table 9: Leading cause rank, number of total deaths, age-adjusted mortality rate, and 95% confidence intervals for county leading causes of death for Females by race: Allegheny County, 2015 and 2016

Cause of Death	Black Females								White Females							
	2015				2016				2015				2016			
	Rank for Black Females	Number	Age-Adjusted Rate ^a	95% Confidence Interval	Rank for Black Females	Number	Age-Adjusted Rate ^a	95% Confidence Interval	Rank for White Females	Number	Age-Adjusted Rate ^a	95% Confidence Interval	Rank for White Females	Number	Age-Adjusted Rate ^a	95% Confidence Interval
All causes		847	827.7	(772.0, 883.5)		840	830.5	(774.4, 886.7)		6,209	630.9	(615.2, 646.5)		6,113	628.7	(612.9, 644.4)
Diseases of heart	2	202	191.9	(165.5, 218.4)	1	208	201.3	(173.9, 228.7)	1	1,532	142.8	(135.7, 150.0)	1	1,444	132.4	(125.6, 139.2)
Malignant neoplasms	1	204	199.1	(171.7, 226.4)	2	161	159.2	(134.6, 183.8)	2	1,220	139.1	(131.3, 146.9)	2	1,241	140.2	(132.4, 148.0)
Accidents (unintentional injuries)	4	42	43.9	(30.6, 57.1)	5	34	38.4	(25.5, 51.3)		273	38.6	(34.0, 43.2)		322	50.8	(45.2, 56.3)
Chronic lower respiratory diseases	5	33	33.7	(22.2, 45.2)	5	34	33.7	(22.4, 45.0)	3	343	36.3	(32.4, 40.1)	4	353	36.3	(32.5, 40.0)
Cerebrovascular disease	3	43	41.3	(29.0, 53.6)	3	51	50.4	(36.6, 64.3)	4	327	30.5	(27.2, 33.8)	3	354	32.3	(29.0, 35.7)
Alzheimer's disease	5	33	29.2	(19.2, 39.2)		18	15.9	(8.6, 23.3)	5	323	25.8	(23.0, 28.7)	5	339	27.4	(24.5, 30.3)
Diabetes mellitus		28	30.3	(19.1, 41.5)	4	37	37.1	(25.1, 49.1)		132	13.7	(11.3, 16.0)		141	15.2	(12.7, 17.8)
Nephritis, nephrotic syndrome and nephrosis		27	26.7	(16.6, 36.7)		28	28.2	(17.8, 38.7)		99	9.5	(7.6, 11.4)		103	10.2	(8.2, 12.1)
Influenza and pneumonia		16	15.7	(8.0, 23.5)		12	14.5	(6.3, 22.7)		163	15.1	(12.8, 17.4)		110	10.6	(8.6, 12.5)
Septicemia		16	15.9	(8.1, 23.7)		11	10.3	(4.2, 16.4)		108	11.7	(9.5, 13.9)		90	9.3	(7.3, 11.2)
Chronic liver disease and cirrhosis		12	11.2	(4.9, 17.5)		8	NA	NA		57	7.7	(5.7, 9.7)		63	8.5	(6.4, 10.6)
Intentional self-harm (suicide)		2	NA	NA		4	NA	NA		35	5.7	(3.8, 7.6)		44	7.8	(5.5, 10.1)
Parkinson's disease		1	NA	NA		2	NA	NA		49	4.9	(3.6, 6.3)		58	5.2	(3.8, 6.5)
Pneumonitis due to solids and liquids		9	NA	NA		8	NA	NA		58	5.2	(3.8, 6.5)		57	5.4	(4.0, 6.8)
Assault (homicide)		7	NA	NA		12	12.9	(5.6, 20.2)		5	NA	NA		6	NA	NA

^aRate is deaths per 100,000 standard population

NA is censored due to low number of events

Table 10: Leading cause rank, number of total deaths, age-adjusted mortality rate, and 95% confidence intervals for county leading causes of death for males by race: Allegheny County, 2015 and 2016

Cause of Death	Black Males								White Males									
	2015				2016				2015				2016					
	Rank for Black Males	Number	Age-Adjusted Rate ^a	95% Confidence Interval	Rank for Black Males	Number	Age-Adjusted Rate ^a	95% Confidence Interval	Rank for White Males	Number	Age-Adjusted Rate ^a	95% Confidence Interval	Rank for White Males	Number	Age-Adjusted Rate ^a	95% Confidence Interval		
All Causes		828	1234.8	(1150.7, 1318.9)		947	1433.3	(1342.0, 1524.6)		5,695	906.8	(883.3, 930.4)		5,657	905.0	(881.4, 928.5)		
Diseases of heart	1	189	290.5	(249.1, 332.0)	1	221	347.3	(301.5, 393.1)	1	1,554	237.9	(226.1, 249.7)	1	1,481	228.3	(216.7, 239.9)		
Malignant neoplasms	2	148	229.0	(192.1, 265.9)	2	182	276.6	(236.4, 316.8)	2	1,300	201.3	(190.4, 212.3)	2	1,257	195.2	(184.4, 206.0)		
Accidents (unintentional injuries)	5	59	79.3	(59.0, 99.5)	3	96	139.6	(111.7, 167.6)	3	401	76.9	(69.4, 84.5)	3	530	102.4	(93.7, 111.2)		
Chronic lower respiratory diseases		23	35.4	(20.9, 49.9)		39	62.5	(42.9, 82.1)	4	234	36.5	(31.8, 41.2)	4	265	41.8	(36.8, 46.9)		
Cerebrovascular disease	4	38	61.5	(42.0, 81.1)	5	40	65.1	(44.9, 85.3)	5	218	33.8	(29.3, 38.3)	5	215	33.7	(29.2, 38.2)		
Alzheimer's disease		13	24.9	(11.4, 38.5)		8	NA	NA		129	20.1	(16.6, 23.6)		116	17.6	(14.4, 20.8)		
Diabetes mellitus		31	47.6	(30.8, 64.3)		22	32.3	(18.8, 45.8)		139	22.4	(18.7, 26.1)		144	22.4	(18.7, 26.1)		
Nephritis, nephrotic syndrome and nephrosis		25	41.4	(25.2, 57.6)		31	52.8	(34.2, 71.3)		140	22.3	(18.6, 26.0)		107	16.7	(13.5, 19.8)		
Influenza and pneumonia		16	24.9	(12.7, 37.1)		7	NA	NA		125	19.4	(16.0, 22.8)		120	18.5	(15.1, 21.8)		
Septicemia		17	24.0	(12.6, 35.5)		15	23.8	(11.7, 35.8)		66	10.0	(7.6, 12.4)		77	12.3	(9.6, 15.1)		
Chronic liver disease and cirrhosis		11	14.8	(6.0, 23.5)		17	19.5	(10.2, 28.7)		91	15.8	(12.5, 19.0)		96	14.9	(12.0, 17.9)		
Intentional self-harm (suicide)		5	NA	NA		15	22.1	(10.9, 33.2)		123	23.1	(19.0, 27.2)		106	20.8	(16.9, 24.8)		
Parkinson's disease		1	NA	NA		4	NA	NA		76	12.4	(9.6, 15.1)		75	12.2	(9.5, 15.0)		
Pneumonitis due to solids and liquids		5	NA	NA		7	NA	NA		55	8.2	(6.0, 10.4)		57	8.7	(6.4, 10.9)		
Assault (homicide)		3	82	101.5	(79.6, 123.5)		4	68	83.9	(64.0, 103.9)		18	3.7	(2.0, 5.4)		17	3.8	(2.0, 5.6)

^aRate is deaths per 100,000 standard population

NA is censored due to low number of events



2016 Allegheny County Mortality Report

September 2018

Table 11. Black to white age-adjusted mortality rate ratio by sex: Allegheny County, 2014-2016

Cause of Death	Black to White Females			Black to White Males		
	2014	2015	2016	2014	2015	2016
All causes	1.3	1.3	1.3	1.4	1.4	1.6
Diseases of heart	1.3	1.3	1.5	1.4	1.2	1.5
Malignant neoplasms	1.4	1.4	1.1	1.2	1.1	1.4
Accidents (unintentional injuries)	0.8	1.1	0.8	0.6	1.0	1.4
Chronic lower respiratory diseases	1	0.9	0.9	1.1	1.0	1.5
Cerebrovascular disease	1.8	1.4	1.6	1.8	1.8	1.9
Alzheimer's disease	0.9	1.1	0.6	1.9	1.2	NA
Diabetes mellitus	2.7	2.2	2.4	2.2	2.1	1.4
Nephritis, nephrotic syndrome and nephrosis	3.2	2.8	2.8	1	1.9	3.2
Influenza and pneumonia	1.1	1.0	1.4	1.4	1.3	NA
Septicemia	2	1.4	1.1	2.1	2.4	1.9
Chronic liver disease and cirrhosis	0.9	1.5	NA	0.7	0.9	1.3
Intentional self-harm (suicide)	0.4	NA	NA	0.4	NA	1.1
Parkinson's disease	0.6	NA	NA	1.1	NA	NA
Pneumonitis due to solids and liquids	0.6	NA	NA	1.1	NA	NA
Assault (homicide)	13.2	NA	NA	41.8	27.6	22.1

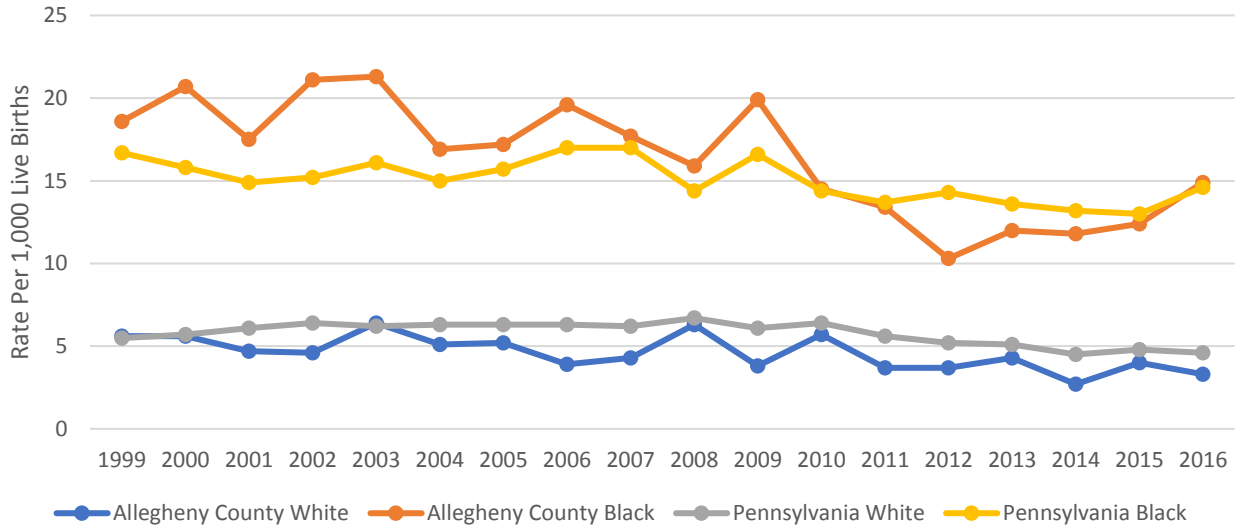
NA not available due to low number of events

Table 12. Median age (years) at death for county leading causes of death by race and sex: Allegheny County, 2015 and 2016

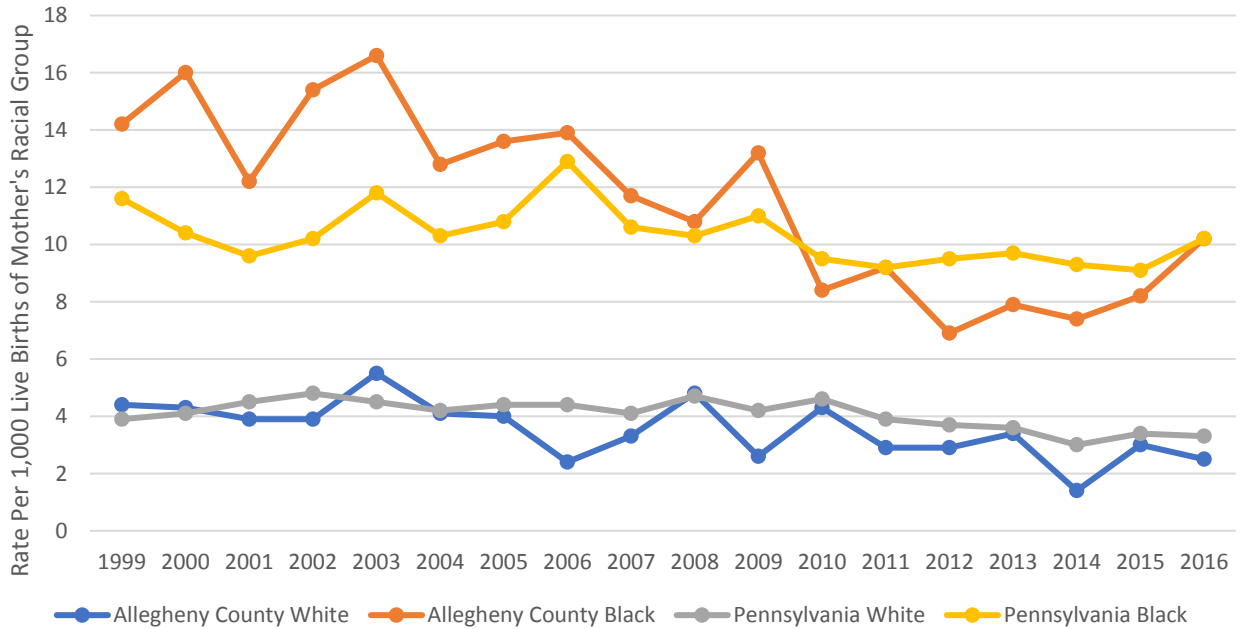
Cause of Death	Females				Males			
	2015		2016		2015		2016	
	Black	White	Black	White	Black	White	Black	White
All causes	74	85	72	84	65	77	65	76
Diseases of heart	78.5	87	75	87.5	69	81	69	80
Malignant neoplasms	71	76.5	69	77	70.5	73	69	74
Accidents (unintentional injuries)	55.5	75	52	56	53	48	50	47
Chronic lower respiratory diseases	80	81	68.5	81	72	79	73	80
Cerebrovascular disease	79	87	74	87	70	81.5	70.5	82
Alzheimer's disease	87	90	90	90	86	87	89.5	88
Diabetes mellitus	75.5	81	68	81	66	76	70	75
Nephritis, nephrotic syndrome and nephrosis	76	86	80	86	77	84	77	84
Septicemia	75.5	81.5	69	83.5	68	77.5	70	76
Influenza and pneumonia	75	87	58.5	87.5	71	84	70	84.5
Intentional self-harm (suicide)	44.5	53	37.5	51.5	35	50	34	48.5
Chronic liver disease and cirrhosis	60.5	62	59.5	62	58	57	62	63.5
Parkinson's disease	76	83	82	87.5	85	82.5	83	84
Pneumonitis due to solids and liquids	78	86.5	85.8	87	74	88	78	85
Assault (homicide)	25	55	25.5	47.5	25	28	27	38



**Figure 9. Infant mortality rate by race and geography:
Allegheny County and Pennsylvania, 1999-2016**



**Figure 10. Neonatal mortality rate by race and geography: Allegheny County
and Pennsylvania, 1999-2016**





2016 Allegheny County Mortality Report

September 2018

Table 13. Neonatal mortality number and rate by race: Allegheny County, 1990-2016

Year	Total Number	Total Rate	White Number	White Rate	Black Number	Black Rate
2016	58	4.4	23	2.5	26	10.2
2015	59	4.4	28	3	21	8.2
2014	48	3.6	13	1.4	19	7.4
2013	67	5	32	3.4	21	7.9
2012	59	4.5	27	2.9	18	6.9
2011	55	4.2	27	2.9	24	9.2
2010	65	5	40	4.3	22	8.4
2009	64	4.9	25	2.6	36	13.2
2008	79	6	46	4.8	30	10.8
2007	69	5.2	32	3.3	33	11.7
2006	62	4.9	23	2.4	37	13.9
2005	76	5.8	39	4	35	13.6
2004	76	5.8	40	4.1	34	12.8
2003	99	7.3	57	5.5	42	16.6
2002	83	6.2	40	3.9	40	15.4
2001	78	5.6	41	3.9	32	12.2
2000	91	6.4	47	4.3	44	16
1999	91	6.3	49	4.4	39	14.2
1998	67	4.7	41	3.6	25	9.3
1997	76	5.2	34	3	42	15.1
1996	79	5.3	45	3.9	34	12
1995	103	6.6	62	5.1	41	13.9
1994	91	5.6	51	4	38	12
1993	118	7.1	60	4.7	54	15.8
1992	116	6.6	56	4.1	58	16
1991	112	6.4	56	4.1	55	15.5
1990	117	6.5	58	4	57	16.6

Neonatal death is defined as a death that occurs between 0 and 27 days after birth

Per 1,000 live births. See Technical Notes for calculation

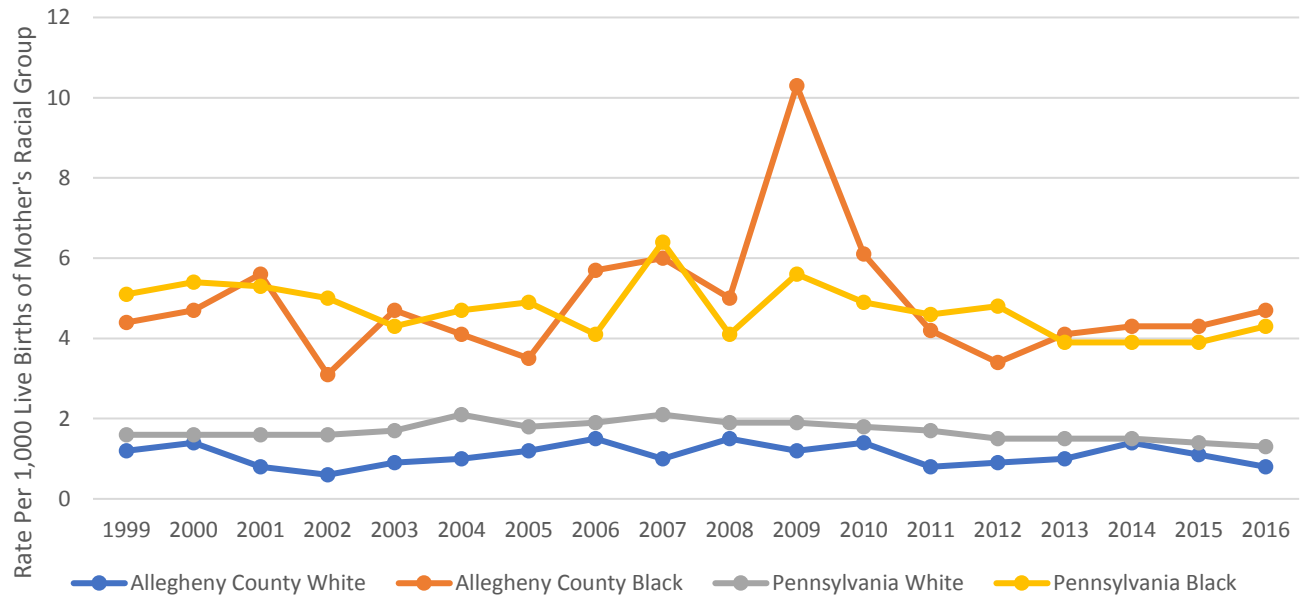
Per 1,000 live births of mother's racial group. See Technical Notes for calculation



2016 Allegheny County Mortality Report

September 2018

Figure 11. Post-neonatal mortality rate by race and geography: Allegheny County and Pennsylvania, 1999-2016





2016 Allegheny County Mortality Report

September 2018

Table 14. Post-neonatal¹ mortality number and rate by race: Allegheny County, 1990-2016

Year	Total Number	Total Rate²	White Number	White Rate³	Black Number	Black Rate³
2016	20	1.5	7	0.8	12	4.7
2015	24	1.8	10	1.1	11	4.3
2014	27	2	13	1.4	11	4.3
2013	21	1.6	9	1	11	4.1
2012	18	1.4	8	0.9	9	3.4
2011	25	1.9	8	0.8	11	4.2
2010	32	2.5	14	1.4	16	6.1
2009	29	2.2	11	1.2	28	10.3
2008	28	2.1	14	1.5	14	5
2007	27	2	10	1	17	6
2006	29	2.3	14	1.5	15	5.7
2005	21	1.6	12	1.2	9	3.5
2004	21	1.6	10	1	11	4.1
2003	21	1.5	9	0.9	12	4.7
2002	16	1.2	6	0.6	8	3.1
2001	23	1.7	9	0.8	14	5.6
2000	29	2	15	1.4	13	4.7
1999	26	1.8	14	1.2	12	4.4
1998	34	2.4	17	1.5	17	6.3
1997	26	1.8	15	1.3	11	3.9
1996	38	2.6	18	1.5	20	7
1995	34	2.2	17	1.4	17	5.8
1994	39	2.4	18	1.4	21	6.6
1993	43	2.6	19	1.5	23	6.7
1992	55	3.1	25	1.8	29	8
1991	56	3.2	35	2.6	21	5.9
1990	51	2.8	25	1.7	24	7

¹Post-neonatal death is defined as a death that occurs between 28 and 364 days after birth

²Per 1,000 live births. See Technical Notes for calculation

³Per 1,000 live births of mother's racial group. See Technical Notes for calculation



TECHNICAL NOTES

A. SOURCES OF DATA

DEATH RECORDS

The registration of death records is the responsibility of the Pennsylvania Department of Health. Birth record information is shared with the Allegheny County Health Department through a cooperative agreement which requires the following disclaimer: "These data were supplied by the State Health Data Center, Pennsylvania Department of health, Harrisburg, Pennsylvania. The Pennsylvania Department of Health specifically disclaims responsibility for any analyses, interpretations or conclusions."

The latest revision of the U.S. Standard Certificate of Death was implemented by Pennsylvania in 2006. These revisions were based upon changes made by the Centers for Disease Control and Prevention, and consisted of three new data items added to the certificate. These three questions pertained to tobacco use contributing to death, pregnancy at the time of death, and type of transportation injury death if a transportation-related injury death occurred.

Beginning in 2013, race was derived from multiple race selections, when previously it was derived from a single race designation field. From 2013, "multirace" was a new race designation assigned to people who chose more than one race out of the possible selections. When only one race was selected, the individual would be designated as that race only.

POPULATION DATA

Population estimates for the state and county were provided by the Division of Health Informatics, Pennsylvania Department of Health. These data were used to compute standard population rates, and were produced jointly by the United States Bureau of the census and the Pennsylvania State Data Center of the Pennsylvania State University at Harrisburg under the Federal-State Cooperative Program for Local Population Estimates.

B. DEFINITIONS OF TERMS

CAUSE OF DEATH: Cause of death is determined to be the most proximal or causal condition or action resulting in an individual's death. The International Classification of Disease, Tenth Revision (ICD-10) acts as a means of categorizing such causes using an alpha-numeric system, which is set forth by the World Health Organization.

INFANT DEATH: The death of a child within the first year of life.

NEONATAL DEATH: The death of a child within the first 28 days of life.

POST-NEONATAL DEATH: The death of a child between 28 and 364 days of life.



2016 Allegheny County Mortality Report

September 2018

MEDIAN AGE: The age that falls exactly in the middle of the entire range of ages ranked in order from low to high such that 50% of the ages fall above it and 50% fall below it.

RACE: Mortality counts for all races besides White and Black were too small to be considered statistically reliable, and therefore only data for these two races are presented in this report.

STATISTICALLY SIGNIFICANT: The use of confidence intervals to determine significance without additional statistical testing may underestimate the number of significant changes in rates detected.

LEADING CAUSES OF DEATH: Leading causes of death are defined using the Centers for Disease Control and Prevention/ National Center for Health Statistics Instruction Manual Part 9, "ICD-10 Cause-of-Death Lists for Tabulating Mortality Statistics", Table B.

C. FORMULAS

Formulas were used to calculate several rates in this report allowing for comparable examination across populations of different sizes.

$$\text{Infant Mortality Rate} = \frac{\text{Number of deaths under 1 year of age}}{\text{Number of live births}} \times 1,000$$

$$\text{Race-Specific Infant Mortality Rate} = \frac{\text{Number of infant deaths of a specific race}}{\text{Number of live births of a specific race}} \times 1,000$$

$$\text{Neonatal Mortality Rate} = \frac{\text{Number of infant deaths under 28 days of age}}{\text{Number of live births}} \times 1,000$$

$$\text{Post-Neonatal Mortality Rate} = \frac{\text{Number of infant deaths 28 to 364 days}}{\text{Number of live births}} \times 1,000$$

$$\text{Crude Death Rate} = \frac{\text{Number of total deaths}}{\text{Total Population}} \times 1,000$$

$$\text{Age-Specific Mortality Rate} = \frac{\text{Number of deaths in a specific age group}}{\text{Population in a specific age group}} \times 1,000$$

$$\text{Race-Specific Mortality Rate} = \frac{\text{Number of deaths of a specific race}}{\text{Population of a specific race}} \times 1,000$$



2016 Allegheny County Mortality Report

September 2018

$$\text{Cause-Specific Mortality Rate} = \frac{\text{Number of deaths from a specific cause}}{\text{Total population}} \times 1,000$$

$$\text{Age-Adjusted Mortality Rate} = \frac{\text{Sum of (age specific mortality rates per 100,000 for selected population x standard population in corresponding age groups)}}{\text{Sum of standard population}}$$

$$\text{Standard Error} = \frac{\text{Age-adjusted rate}}{\sqrt{\text{Number of deaths}}}$$

$$95\% \text{ Confidence Interval} = \text{Age – adjusted rate} \pm (1.96 \times \text{standard error})$$

All age-adjusted rates found within this report are adjusted by the direct method using the 2000 U.S. Standard Million Population. The 2000 U.S. standard million population and age distributions used in calculating age-adjusted mortality rates are as follows:

All Ages.....	1,000,000
Under 1.....	13,818
1-4.....	55,317
5-14.....	145,565
15-24.....	138,646
25-34.....	135,573
35-44.....	162,613
45-54.....	134,834
55-64.....	87,247
65-74.....	66,037
75-84.....	44,842
85+.....	15,508