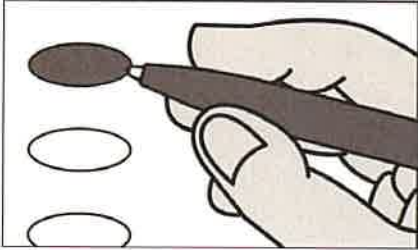


Instructions

Making Selections

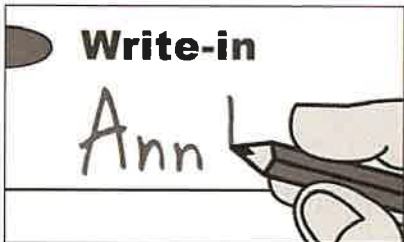


Fill in the oval to the left of the name of your choice. You must blacken the oval completely. Do not make any marks outside of the oval. You do not have to vote in every race.

Do not cross out or erase, or your vote may not count. If you make a mistake or a stray mark, ask for a new ballot from the poll workers.

WARNING: If you receive an absentee or mail-in ballot and return your voted ballot by the deadline, you may not vote at your polling place on election day. If you are unable to return your voted absentee or mail-in ballot by the deadline, you may only vote a provisional ballot at your polling place on election day, unless you surrender your absentee or mail-in ballot and envelope to the judge of elections to be voided to vote by regular ballot.

Optional write-in



To add a candidate, fill in the oval to the left of "Write-in" and print the name clearly in the space provided.

**Representative in the General
Assembly**
35th District
To Fill Vacancy
Vote for One

- Dan Goughnour**
Democratic
- Charles D. Davis**
Republican
- Adam Kitta**
Libe-tarian
-

Write-in

Thank you for voting!
Please turn in your finished ballot.



Allegheny County
BOARD OF ELECTIONS

