

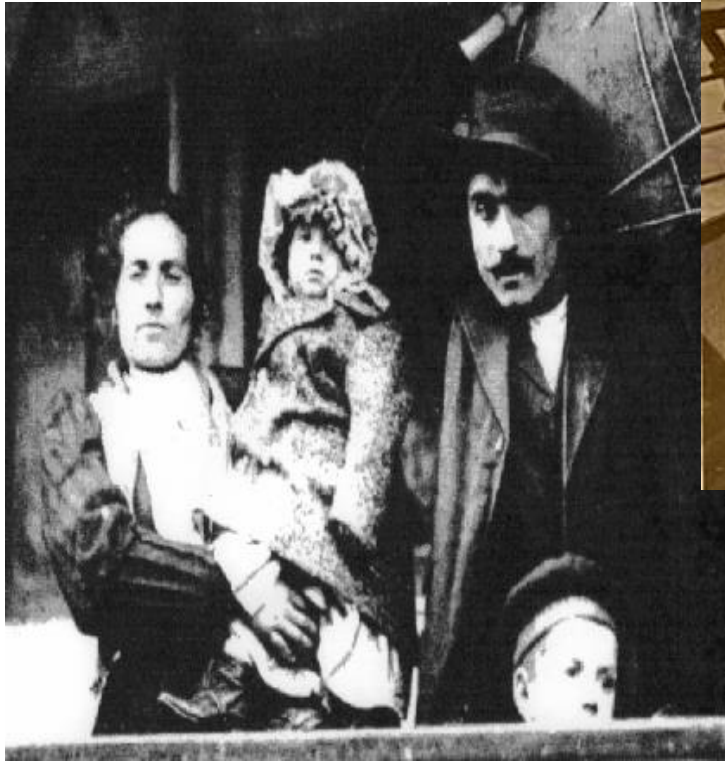
Overview of the Immigration Process

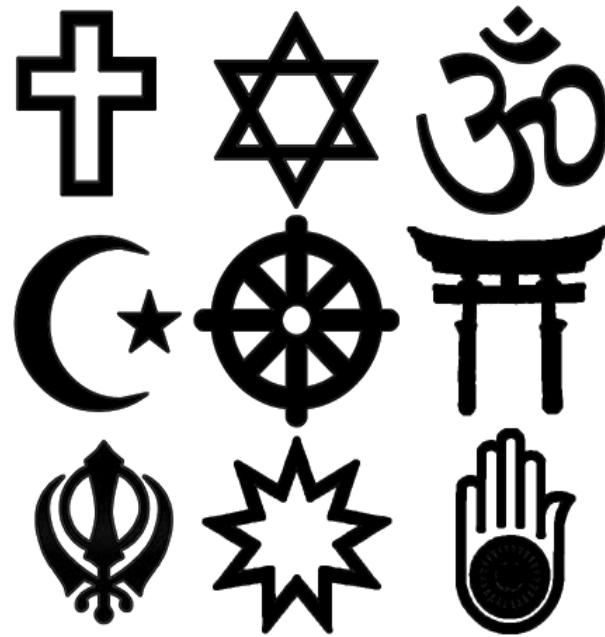


Immigrant Services and Connections (ISAC) Program

Dawn Brubaker, JFCS of Pittsburgh
Kheir Mugwaneza, NAMS

Why Did Your Family Immigrate?





Why Families Come to the U.S.: Then & Now

- Economic reasons
- Educational opportunities
- Religious freedom
- Family reunification
- Escape unsafe homeland – seek asylum
- Forced migration



Terms



International

- Person who comes to a country to study or work and then return or go to another country.

Immigrant

- Person who comes to a country to take up permanent residence

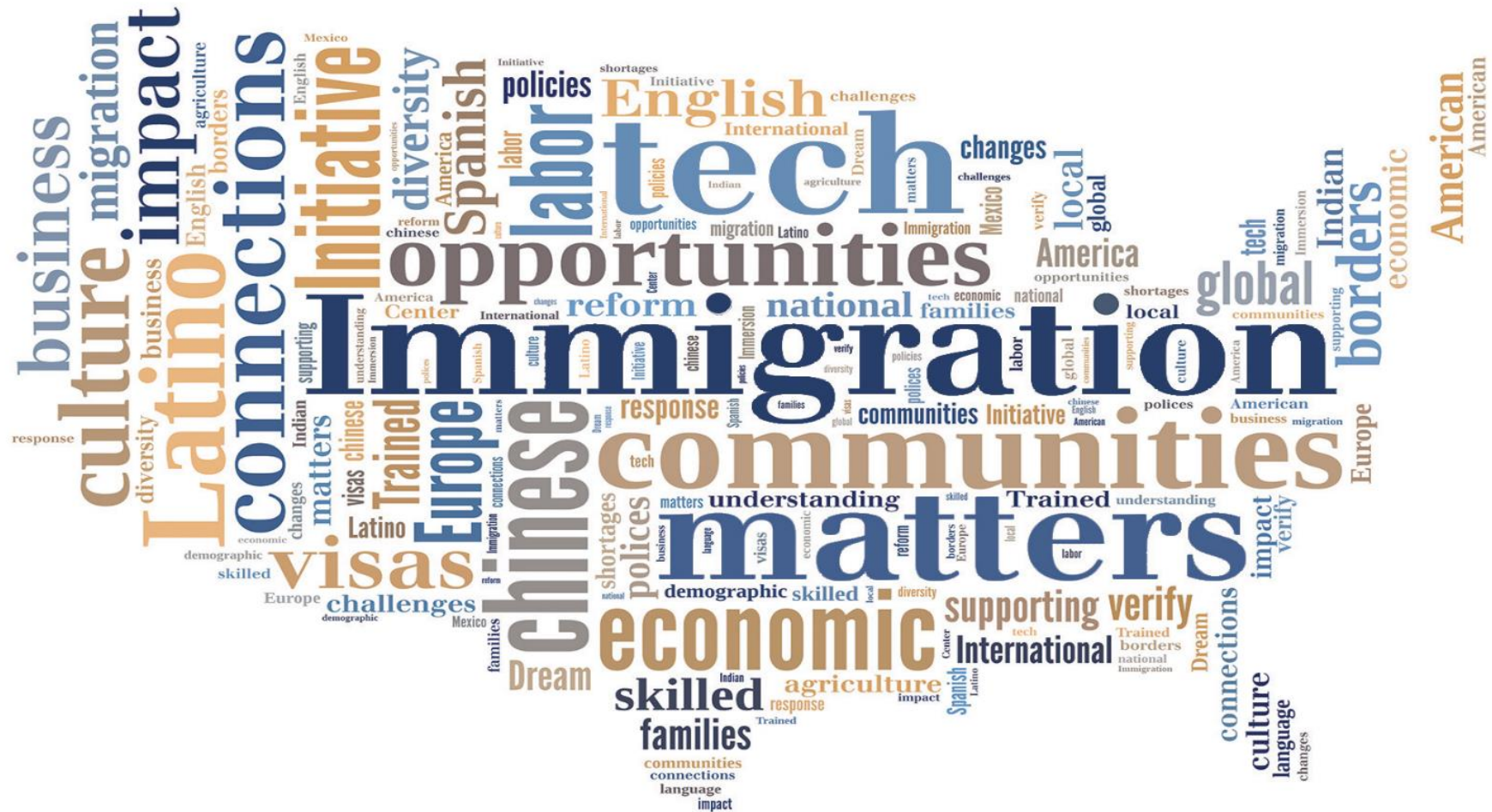
Refugee/Asylee (Type of Immigration Status)

- Person outside of his/her country of nationality
- Has well-founded fear of persecution on account of race, religion, nationality, political opinion, or membership in a particular social group
Unable or unwilling to return home (UNHCR)

Out-of-Status (Undocumented)

- Person in the country that has remained beyond the allocated time indicated on their travel documentation or someone without travel documentation.

Benefits of Immigration



Immigrant-Founded Companies

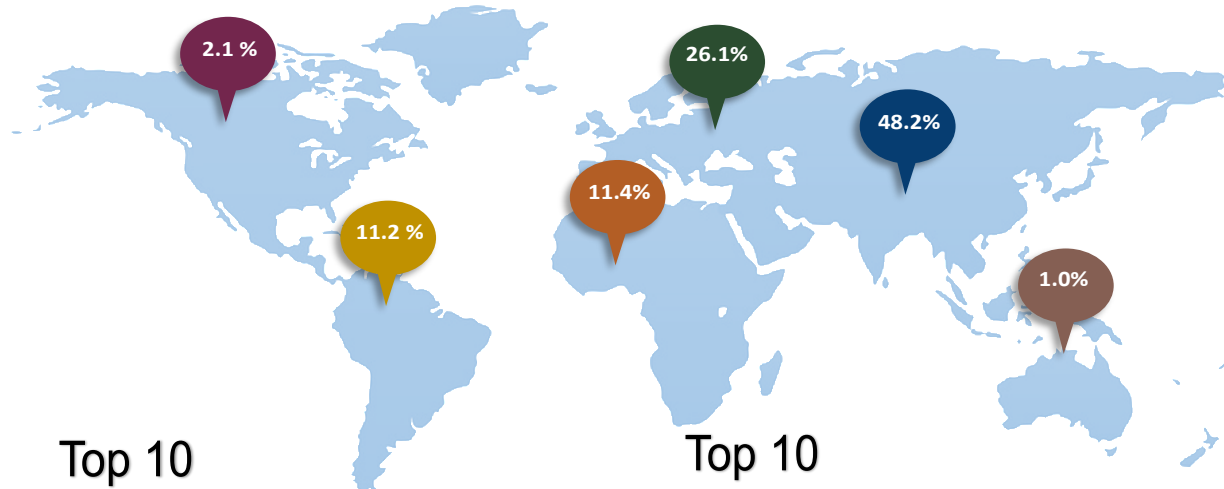
The Google logo, featuring the word "Google" in its signature multi-colored font.The Intel logo, consisting of the word "intel" in a blue, lowercase, sans-serif font, enclosed within a blue swoosh that forms a partial circle.The Levi's logo, featuring the word "Levi's" in white, bold, sans-serif font on a red, batwing-shaped background, with "LEVI STRAUSS & CO." in smaller white text below it.The AT&T logo, featuring a blue globe icon with horizontal lines above the text "AT&T" in a bold, black, sans-serif font.The Pfizer logo, featuring the word "Pfizer" in a white, serif font inside a blue oval.The Budweiser logo, featuring the word "Budweiser" in a white, cursive script font on a red, ribbon-like background with a gold crown above it.The LinkedIn logo, featuring the words "Linked in" in a black, sans-serif font, with "in" inside a blue square.The Sun Microsystems logo, featuring a blue icon of three interlocking squares to the left of the word "Sun" in a blue, serif font, with "microsystems" in a smaller, black, sans-serif font below it.The DuPont logo, featuring the word "DUPONT" in a white, serif font inside a red oval.The P&G logo, featuring the letters "P&G" in a large, blue, serif font, with "Procter & Gamble" in a smaller, blue, serif font below it.The YouTube logo, featuring the words "You Tube" in a white, sans-serif font on a red rectangular background, with "Broadcast Yourself" in a smaller, black, sans-serif font below it.The Garmin logo, featuring the word "GARMIN" in a white, sans-serif font on a black rectangular background, with a small blue triangle above the "I".The Yahoo! logo, featuring the word "YAHOO!" in a purple, serif font.The Carnival logo, featuring a small red and blue icon to the left of the word "Carnival" in a black, serif font, with "The Fun Ships" in a smaller, black, sans-serif font below it.The eBay logo, featuring the word "eBay" in a stylized, multi-colored font.The PayPal logo, featuring the word "PayPal" in a blue, sans-serif font.The NVIDIA logo, featuring a green icon of an eye with a stylized "V" shape inside, above the word "NVIDIA" in a black, sans-serif font.The Dow logo, featuring the word "DOW" in a white, sans-serif font inside a red diamond shape.The United States Steel logo, featuring a blue circular icon with "USS" inside, followed by the words "United States Steel" in a blue, sans-serif font.The Coors logo, featuring the word "Coors" in a white, cursive script font on a red rectangular background.



Immigrants & Internationals in Allegheny County

Data Source: American Community Survey
1-year and 3-year data 2007-2015

Region of Origin



Foreign-born Population since 2007



Top 10 Countries of Origin

Total Foreign-born Population: 73,265

India	9,472
China	8,227
Italy	3,462
Korea	2,288
Germany	2,262
United Kingdom	2,154
Canada	1,891
Russia	1,843
Mexico	1,473
Philippines	1,268

Top 10 Language Groups

Total Foreign Language Speakers: 85,005

Spanish	13,575
Chinese	11,123
Italian	6,460
French	6,194
Indic Languages	5,252
Asian Languages	4,199
Hindi	3,760
German	3,640
Arabic	3,519
Russian	3,434

Top 10 (Limited English Proficiency) LEP Language Groups

Total LEP Population: 29,111

Chinese	6,903
Spanish	3,414
Indic Languages	3,085
Italian	1,815
French	1,735
African Languages	1,681
Arabic	1,485
Russian	1,450
Asian Languages	928
Korean	771

Country Specific Refugees Resettled Since 2001

Bhutan	2,045
Burma (Myanmar)	699
Congo	229
Iraq	508
Russia	234
Somalia	357
Sudan	133
Syria	166

Total refugees resettled in the Past 10 years 4, 092

Positive Immigrant Impact in Pittsburgh

- From 2009 -2014 the Pittsburgh population decreased by .06% But the immigrant population grew 13.85% during the same timeframe
- 81,000 or 3.4% of the population are immigrants with 23.4% being from China or India
- Higher Education saw \$367 Million in revenue through foreign or international students
- 400 foreign companies represented by 37 countries employee over 50,000 people locally
- Pittsburgh's exports grew by 45% from 6.9 to 10 billion from 2005 to 2014.
(Asia, Africa, NAFTA, EU)

World Affairs Council of Pittsburgh
(2017). Global Snapshot

Allegheny County's Immigrant Community

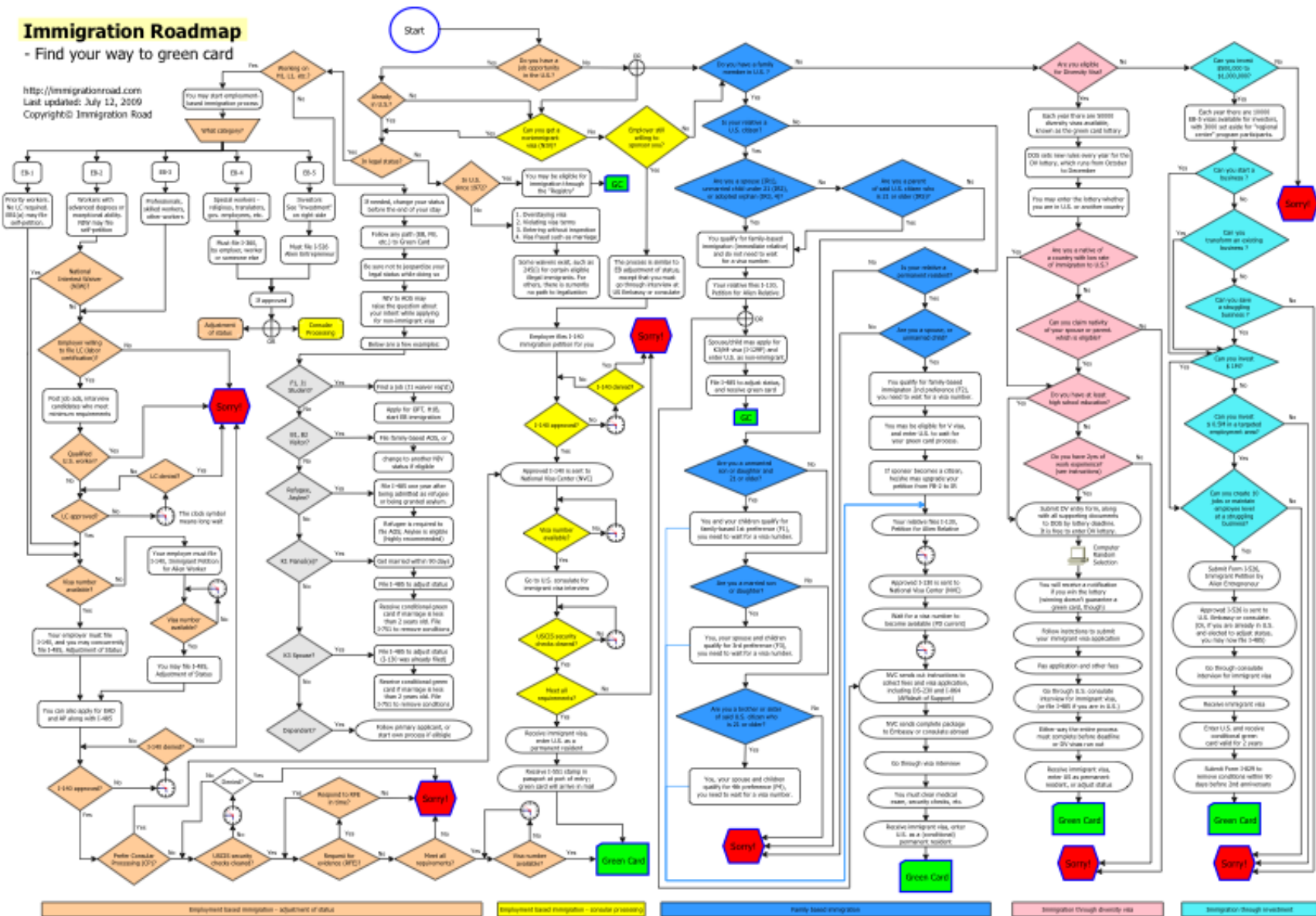
*Bhutanese
Bosnian or Yugoslavian
Burmese
Chinese
Congolese
Colombian
Honduran
Indian
Iraqi
Italian
Korean
Mexican
Russian
South Sudanese
Somali Bantu
Syrian
Ukrainian
Uzbek*



Immigration Roadmap

- Find your way to green card

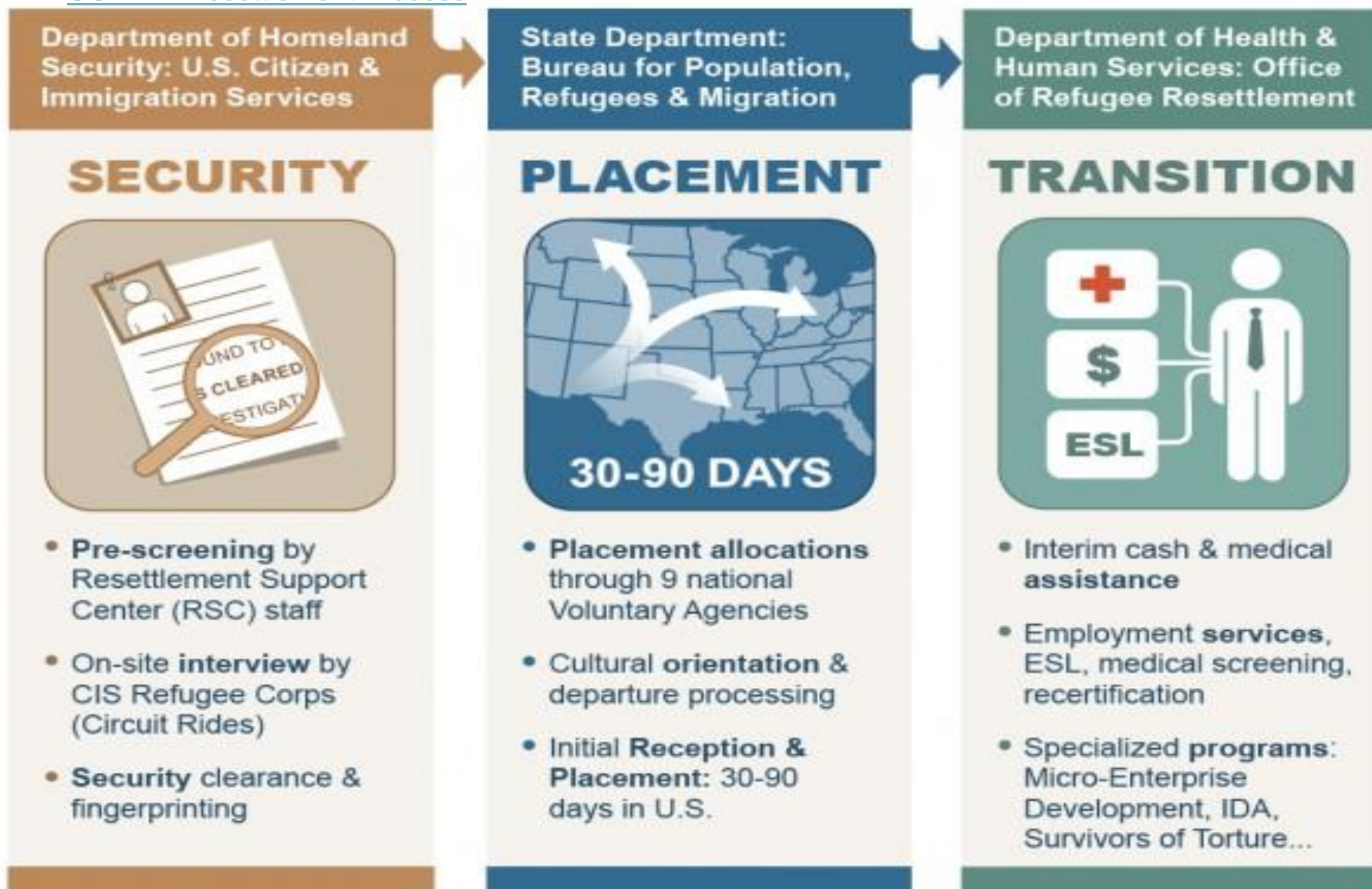
<http://immigrationroad.com>
Last updated: July 12, 2009
Copyright© Immigration Road



Disclaimer: This immigration roadmap is for general guidance only and cannot be construed as legal advice. U.S. immigration laws and regulations are ever changing, so always confer with USCIS and/or consult a qualified professional with regard to your case. No warranty is made regarding the accuracy of any information. Not all possible ways to BC are covered by this flowchart, and approximations to happen are not included. You may start multiple processes if you are eligible.

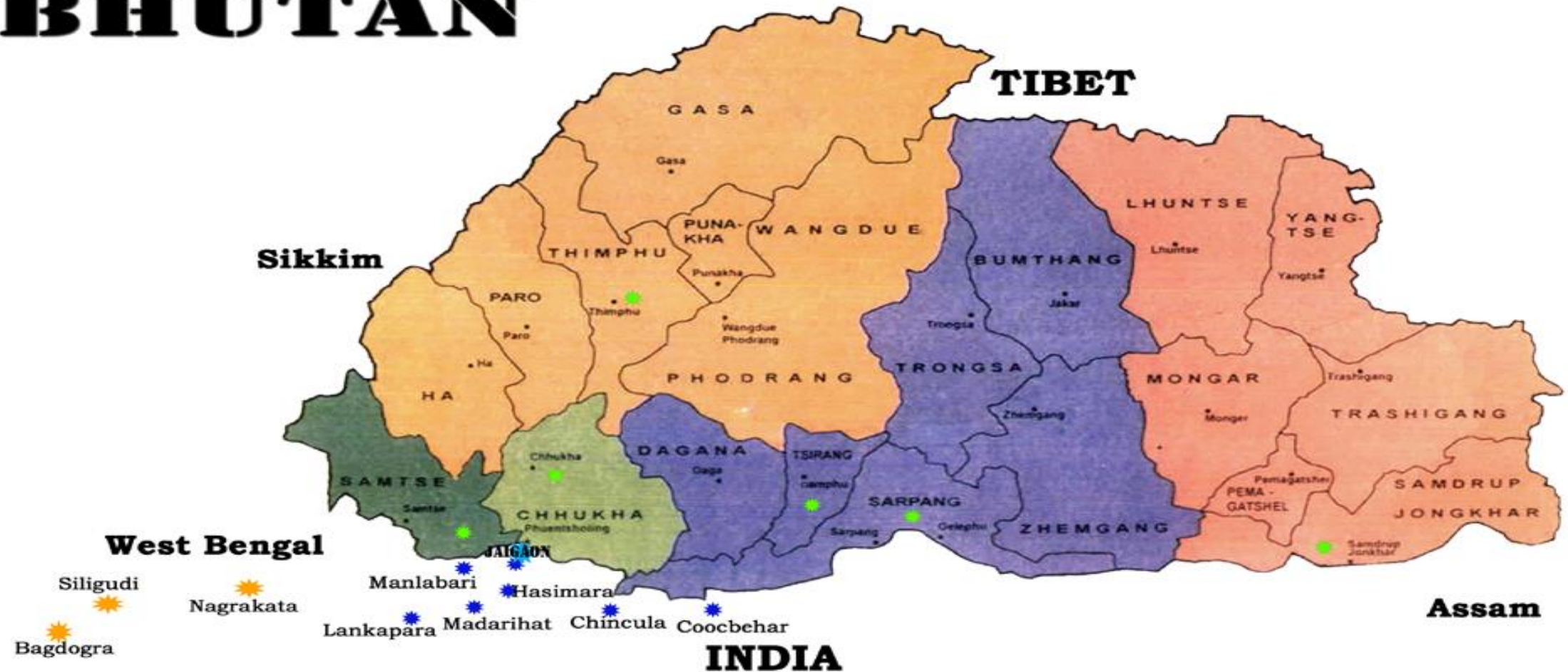
Kliff, S. (2013, January 29). The insanely confusing path to legal immigration, in one chart. The Washington Post. Retrieved from <https://www.washingtonpost.com/news/wonk/wp/2013/01/29/the-path-to-legal-immigration-in-one-insanely-confusing-chart/?utmterm=.a5e0408ba63f>

CORE -- Resettlement Process



BHUTAN

NEPAL



- Participants came from following area of Bhutan.
 - ★ Participants came from following area of Doars, North Bengal, India.
 - ★ Bible Classes held at Jaigaon, Indo-Bhutan Border.
- Places name on Indian side are not on scale.

Bhutanese People

- 20 years in refugee camps
- Speak Nepali
- Hindu, Buddhist, Christian
- Strong Bhutanese Community (BCAP)
- Seniors and those with disabilities are cared for by family at home
- Gender roles and generational roles should be considered
- Multigenerational and extended family households
- Warm and welcoming to outsiders





Congolese People

- Congolese, Possible Tribal Identification (hidden)
- Speak Kiswahili & Kinyarwanda
- Christian
- Multigenerational homes
- Many single mother families
- Families are eager to seek out possible resources
- Higher rates of trauma exposure

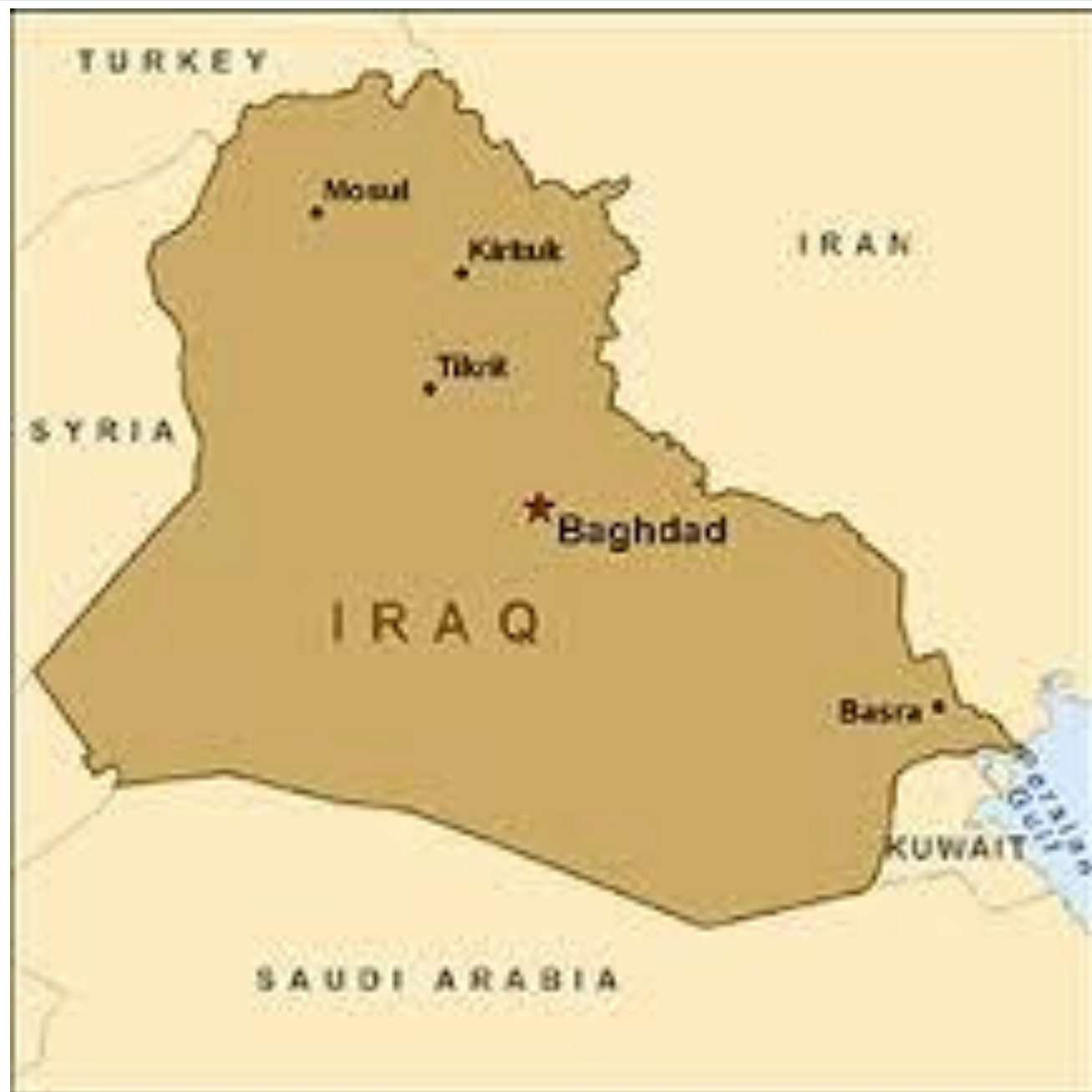




Syrian Refugees

- Civil war has devastated infrastructure
- Multigenerational homes stay together
- Gender and generational roles are culturally established
- Mainly Sunni Muslim, Kurdish
- Trust takes time to build
- Seniors are greatly respected
- Those with disabilities are cared for by family





Refugees from Iraq

- *Extreme War*
- Sunni, Shia & Kurd
- *Speak Arabic and Kurdish*
- Muslim
- Multigenerational homes stay together
- Gender and generational roles are strong
- Trust takes time to build due to geopolitical situation
- Seniors are greatly respected
- Those with disabilities are cared for when possible





Latino Community

Deto, R. (2017, April 05). Pittsburgh's City Paper. Bienvenidos a Pittsburgh: The growth of the city's Latino community is contributing to the revitalization of the South Hills.

- A diverse group of different origins and cultures
 - Largest places of origin: Mexico , Puerto Rico (U.S. Territory)
 - Other origins include El Salvador, Honduras, Guatemala, and Cuba
- Share in common a Latin American heritage
- The majority speak Spanish, but other languages are common
- A vibrant group that cannot be easily defined within a social category

