

ALLEGHENY
FORWARD

ALLEGHENY COUNTY'S COMPREHENSIVE PLAN

An aerial photograph of a city with a large steel truss bridge spanning a wide river. The city is densely packed with buildings and greenery, with hills visible in the background. The sky is clear and blue. The text is overlaid on the image in a white, bold, sans-serif font, with the word 'together' in a cursive script.

Let's build our
next era
together

**Why this
conversation matters**

Allegheny County's new comprehensive plan will be:

- ▶ **A bold long-range framework to guide growth and investments for the county's next 25 years**
- ▶ **An aligned set of priorities for land use, infrastructure, housing, culture, open space, and economic development across levels of government**
- ▶ **More than a vision: We're committed to building a plan for all and delivering on its promises.**

What does Allegheny
County's **future prosperity**
look like for your
community?



ALLEGHENY
FORWARD



Input from community members and partners drives our focus.

- ▶ This plan will guide decisions for the next 25 years.
- ▶ The choices we make now will shape every community.
- ▶ Making this plan implementable depends on building it to address **what people care about most.**

We are not
creating a book.

**We are creating connections
and pathways for action.**

ALLEGHENY
FORWARD

Welcome!

We're glad
you're here.

Tonight we will:

Set the context

Define the direction ahead

Reveal what we've heard so far

Understand the impact of your input

Lay out what happens next

Close with questions

A few quick notes:

- ▶ **This session is being recorded.**
- ▶ **Submit questions via Q&A button.**
- ▶ **Captions are available on the Zoom toolbar.**
- ▶ **Polls will pop up – please jump in!**
- ▶ **Q&A at the end.**

**Where we
are today**

Trends: Our People



Allegheny County is losing population.

This is mostly about people leaving, not fewer births.



The number of aging households is rising.

We skew older than the nation as a whole.



We're well educated.

47% of adults hold a bachelor's degree or higher, well above state and national rates.

Trends: Our Homes



Homes are getting harder to afford.

Costs are rising faster than incomes.



Household size is shrinking.

At the same time, the number of households is growing.



Many of us are aging in place.

1.5 times the national rate

Trends: Our Economy



Our anchors are health care, education, and government



... each of which may be affected by the shifting federal landscape



Our commute looks different

More of us work from home or use public transit than the national average

These trends suggest issues and opportunities we should address.

- ▶ Strengthen our tax base through retention and growth.
- ▶ Modernize services for a changing population.
- ▶ Convert talent into economic momentum.
- ▶ Leverage anchor institutions as innovation engines.
- ▶ Improve housing affordability and access.
- ▶ Match housing supply to today's households.

What the county **can** do:

Provide resources

Manage assets

Adopt legislation

Build capacity

Convene conversation

What the county **can't** do:

Control local land use or zoning

Override local councils or supervisors

Guarantee market outcomes

Ignore state and federal constraints

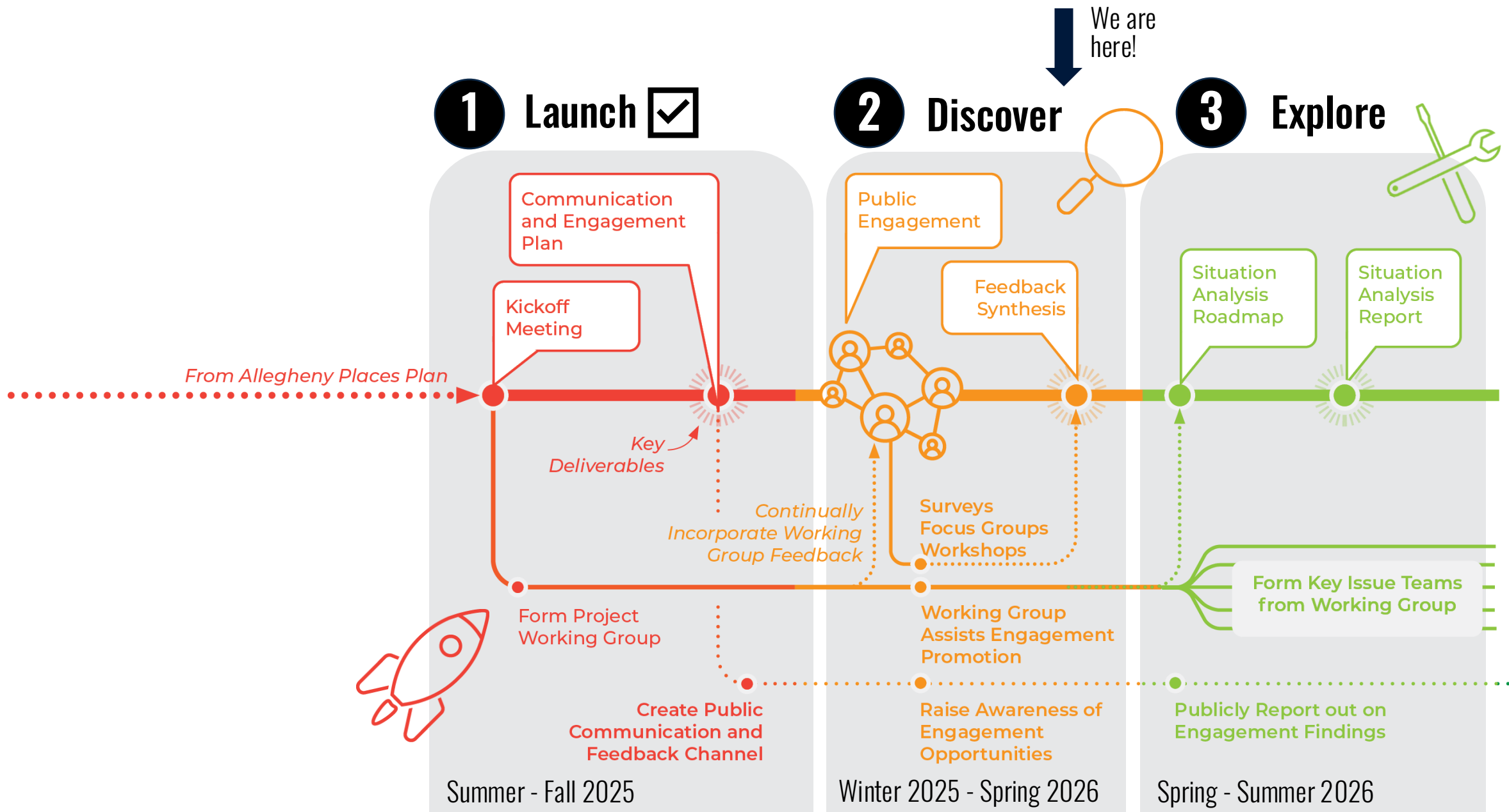
Fund everything

What do you think?

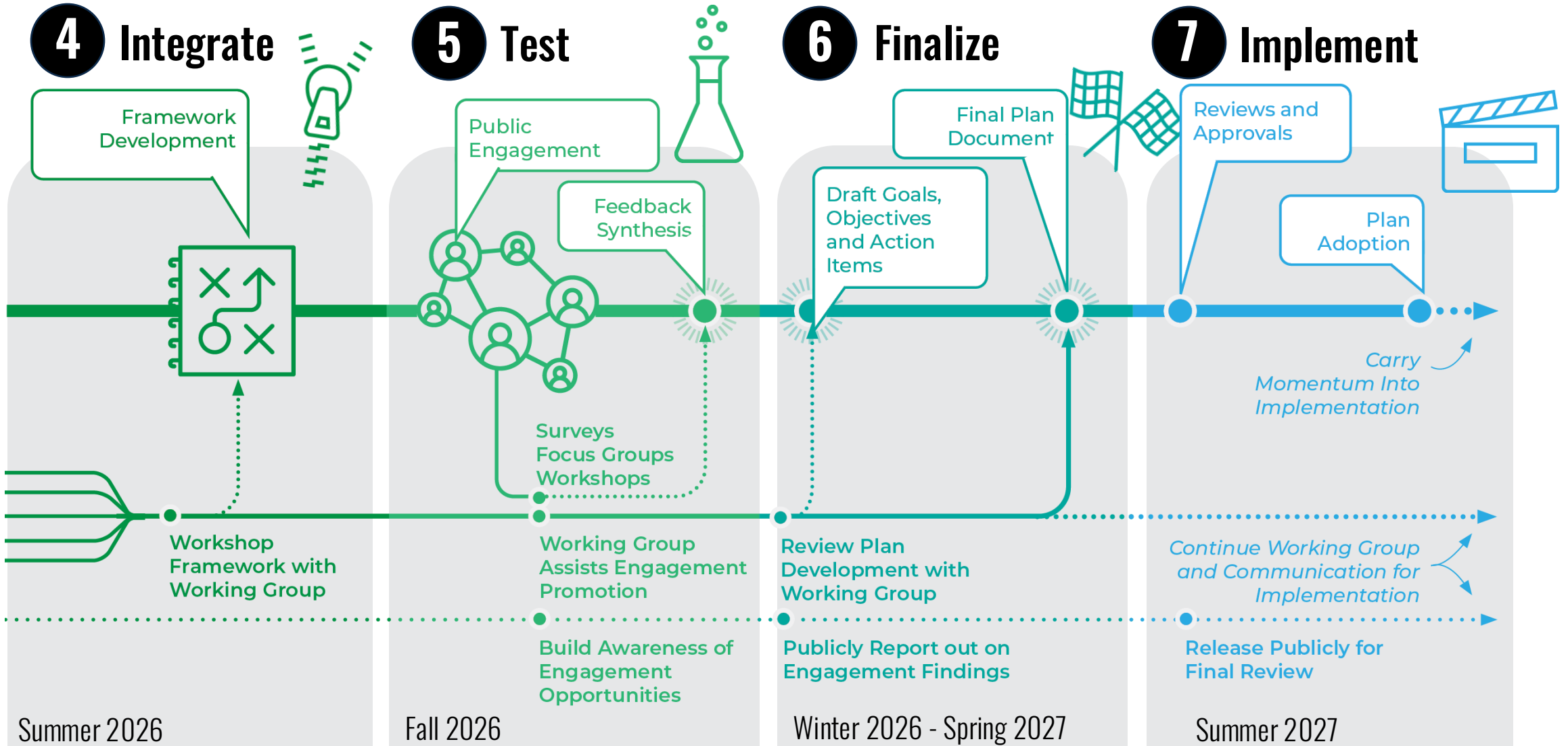
Poll 1: Which communities
within our county are **thriving**?

Poll 2: Which communities
are **facing challenges**?

**Where we're
headed**



Crafting Allegheny Forward



Who's involved?

The people of Allegheny County!

Client Team

County Executive + Allegheny County Economic Development

Municipal Working Group

Representatives of all 130 municipal governments

Technical Advisory Group

County department heads, Authority executive directors

Stakeholder Working Group

Partner organizations, advocacy groups, community perspectives



Action Teams

Specific to Key Issues

Coordinating efforts

All in Allegheny

allin.alleghenycounty.us

Climate Action Plan

engagement.alleghenycounty.us/climate-action-plan

Mon Valley Forward

monvalleyforward@alleghenycounty.us

Housing Needs Assessment

acedplanning@alleghenycounty.us

Land Bank Feasibility Study

acedplanning@alleghenycounty.us

PGH 2050

pgh2050.com

PRT Bus Line Refresh

engage.rideprt.org/buslineredesign

**What we've
heard so far**

Municipal Participation [\(municipal staff or officials\)](#) as of March 1st

Aleppo Township
Avalon Borough
Bell Acres Borough
Bethel Park
Braddock Borough
Bradford Woods Borough
Brentwood Borough
Bridgeville Borough
Carnegie Borough
Castle Shannon Borough
Chalfont Borough
Churchill Borough
Clairton, City of
Crafton Borough
Dormont Borough
Dravosburg Borough
Duquesne, City of
East McKeesport Borough
East Pittsburgh Borough

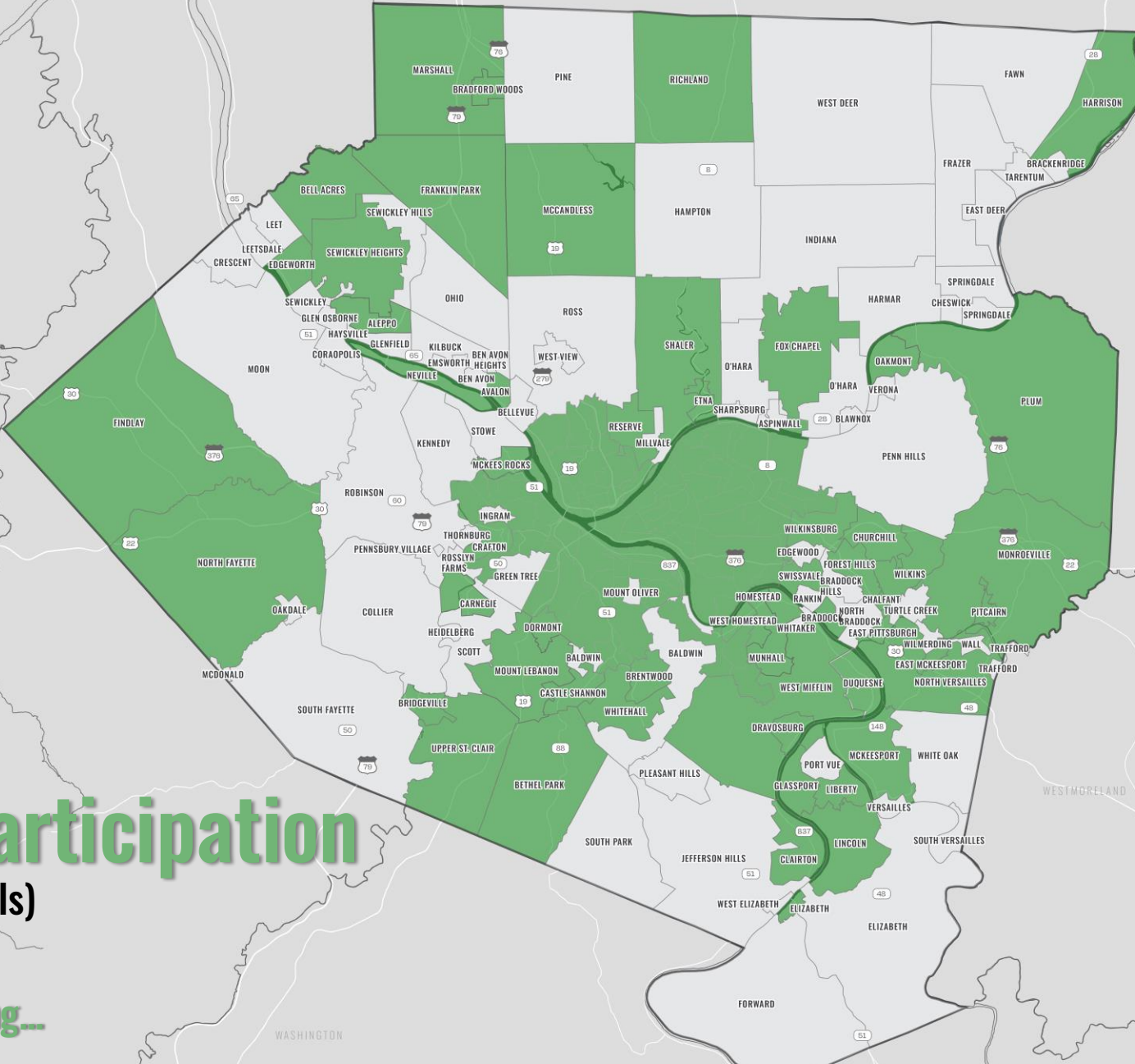
Edgeworth Borough
Elizabeth Borough
Etna Borough
Findlay Township
Forest Hills Borough
Fox Chapel Borough
Franklin Park Borough
Glassport Borough
Harrison Township
Homestead Borough
Liberty Borough
Lincoln Borough
Marshall Township
McCandless
McKees Rocks Borough
McKeesport, City of
Monroeville
Mount Lebanon Township
Munhall Borough

Neville Township
North Fayette Township
North Versailles Township
Oakmont Borough
Pitcairn Borough
Pittsburgh, City of
Plum Borough
Reserve Township
Richland Township
Sewickley Heights Borough
Shaler Township
Swissvale Borough
Upper St. Clair Township
West Homestead Borough
West Mifflin Borough
Whitehall Borough
Wilkins Township
Wilkesburg Borough

Municipal Participation

(municipal staff or officials)
as of March 1st

56 out of 130 and counting...



Emerging themes



REGIONAL LEADERSHIP AND COLLABORATION

Many challenges are too big for any one community to solve alone.



INFRASTRUCTURE AND RESILIENCE

Aging infrastructure and flood-prone areas are vulnerable to more severe climate events.

Emerging themes



HOUSING AND NEIGHBORHOODS

Not all residents have access to quality, attainable housing choices in healthy neighborhoods with local job opportunities.



PARKS AND RECREATION

We have great assets, but not all are accessible or best suited for today's community needs.

Emerging themes



JOBS AND ECONOMIC MOBILITY

Stronger workforce development and support can narrow the gap between wages and expenses.



EQUITY AND QUALITY OF LIFE

Not all residents have equal access to clean air and water, safe housing, healthy food, and other basic needs.

Emerging themes



POPULATION CHANGE

What pressures and opportunities will demographic change bring?



TRANSPORTATION AND ACCESS

Reliable transit and safe, well-designed streets make a big difference for quality of life and the local economy.



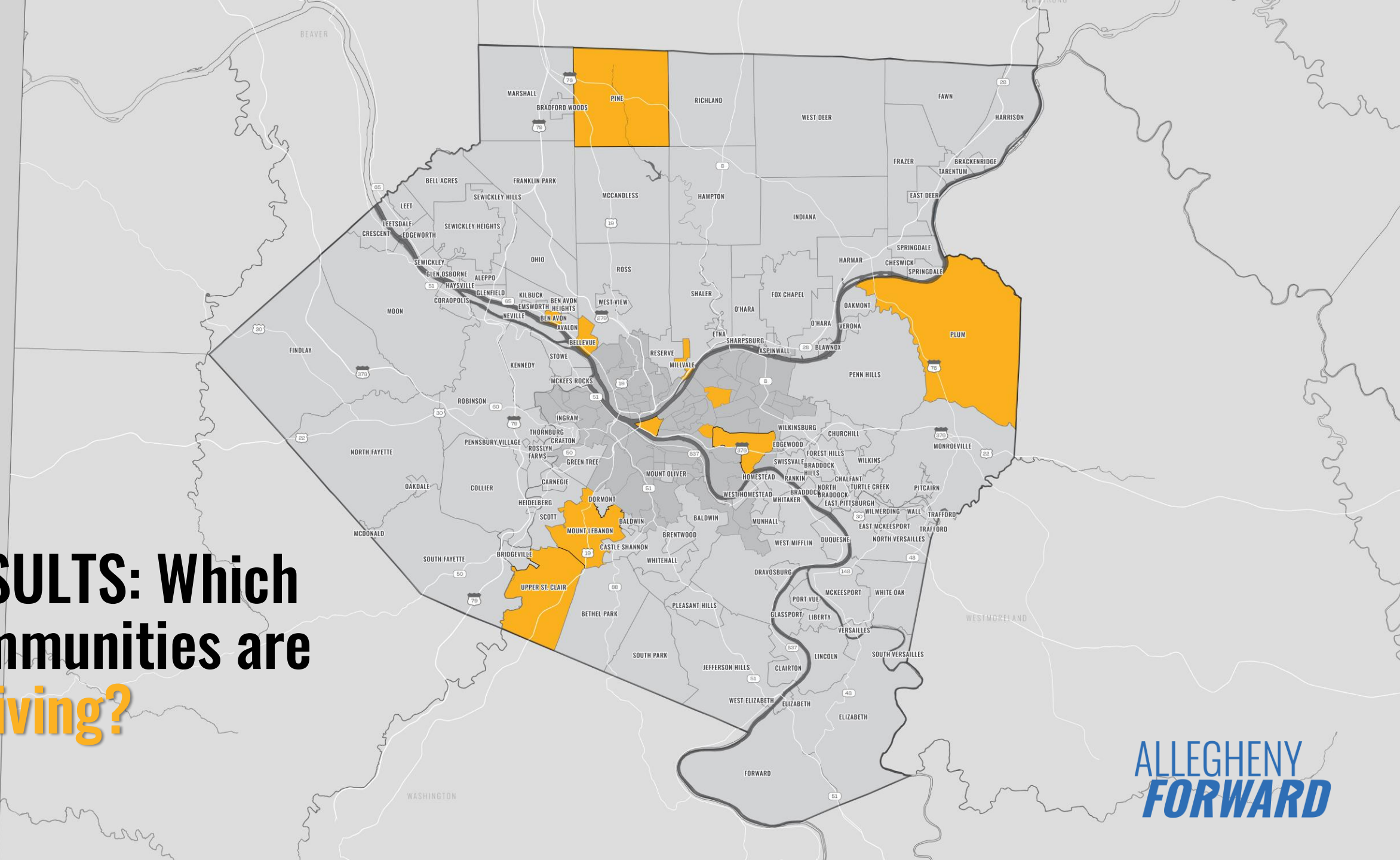
CULTURE

Culture extends beyond art by encompassing community identity and heritage.

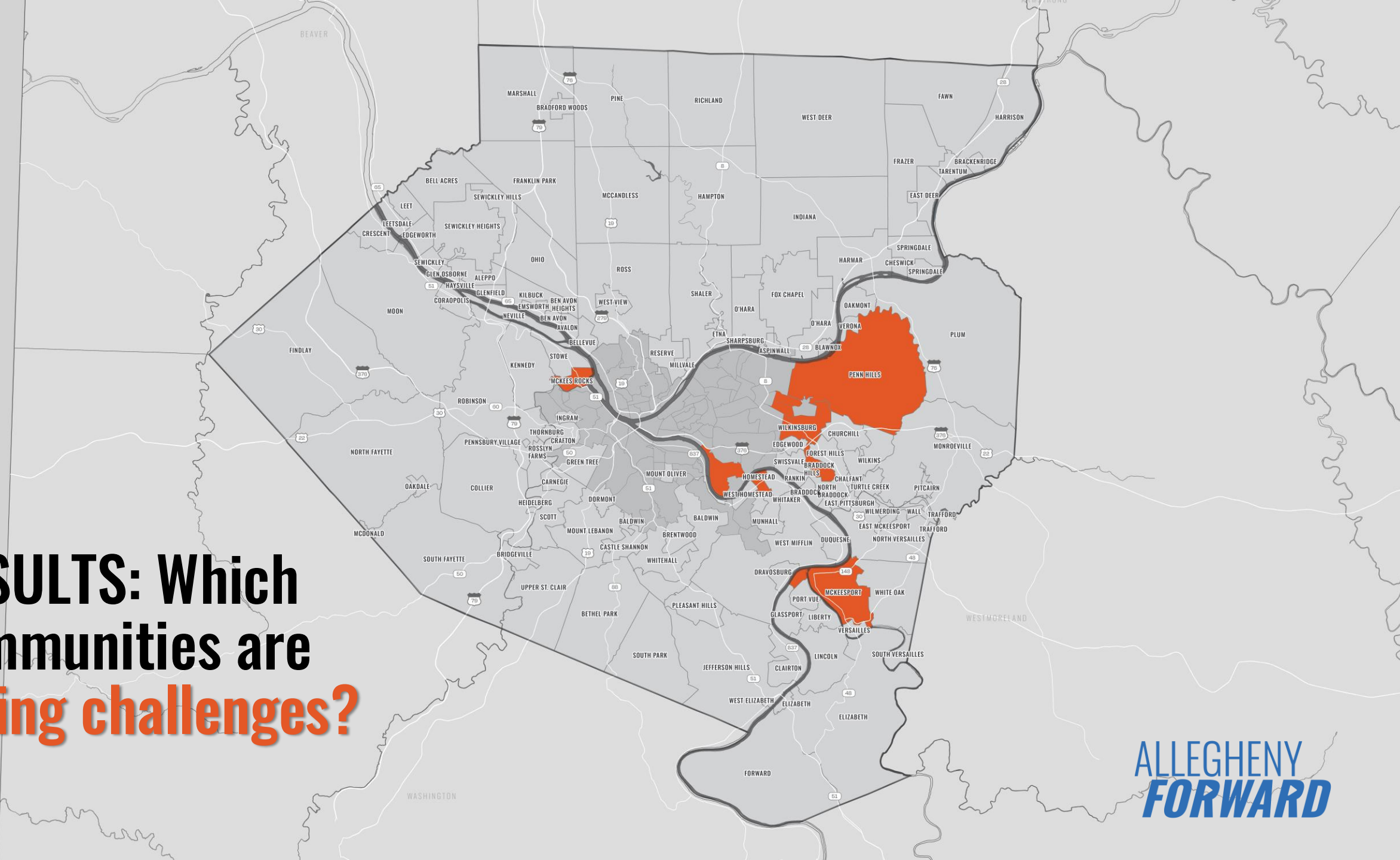
What do you think?

Poll 3: **Rank** the early
themes in terms of
importance to this plan

RESULTS: Which communities are thriving?



RESULTS: Which communities are facing challenges?



From input to prosperity playbook

Creating a comp plan for all means getting everyone to the table.

- ▶ The Key Issues at the core of this plan will address **what people care about most.**
- ▶ What the community tells us informs how we define and work on the plan's **Key Issues.**
- ▶ We'll report out on what we're hearing and how it's shaping the plan. Stay tuned this year to let us know whether we're **getting it right.**

What do
you think?

Poll 4: If Allegheny
County could work on
only one idea that would
make the county a
better place, what
should it be?

Here are a few ideas people have shared so far:

- ▶ Expand transportation options, including public transit and safer bike routes, trails, and sidewalks
- ▶ Make communities safer and more vibrant by cleaning up blighted properties and creating more housing choices
- ▶ Reduce inequalities by improving access to clean air, healthy food, and important social services

**What
happens next**

Stay involved:

- ▶ Visit and share our **Allegheny Forward Project Website** and engagement tools
- ▶ Join the e-mail update list
- ▶ Additional ideas or questions? Contact acedplanning@alleghenycounty.us.

[engagement.alleghenycounty.us/
allegheny-forward](https://engagement.alleghenycounty.us/allegheny-forward)



ALLEGHENY
FORWARD

Stay involved:

- ▶ Visit and share our **Allegheny Forward Project Website** and engagement tools
- ▶ Join the e-mail update list
- ▶ Additional ideas or questions? Contact acedplanning@alleghenycounty.us.

But first...time for Q&A!



[engagement.alleghenycounty.us/
allegheny-forward](https://engagement.alleghenycounty.us/allegheny-forward)



Breakout instructions

- ▶ Use the "raise hand" tool if you would prefer to unmute to ask your question.
- ▶ Be a good neighbor: Let's keep the conversation welcoming and productive with respectful comments focused on the topic at hand.